

INTRODUCING



THE FALLS

GRANDHARBOR



“THE ST. LUCIA”



ONE | Sotheby's
INTERNATIONAL REALTY

ONESothebysrealty.com | GrandHarbor@ONESothebysrealty.com

2229 Falls Circle | Vero Beach, FL 32967 | 772.562.9000



THE ST. LUCIA

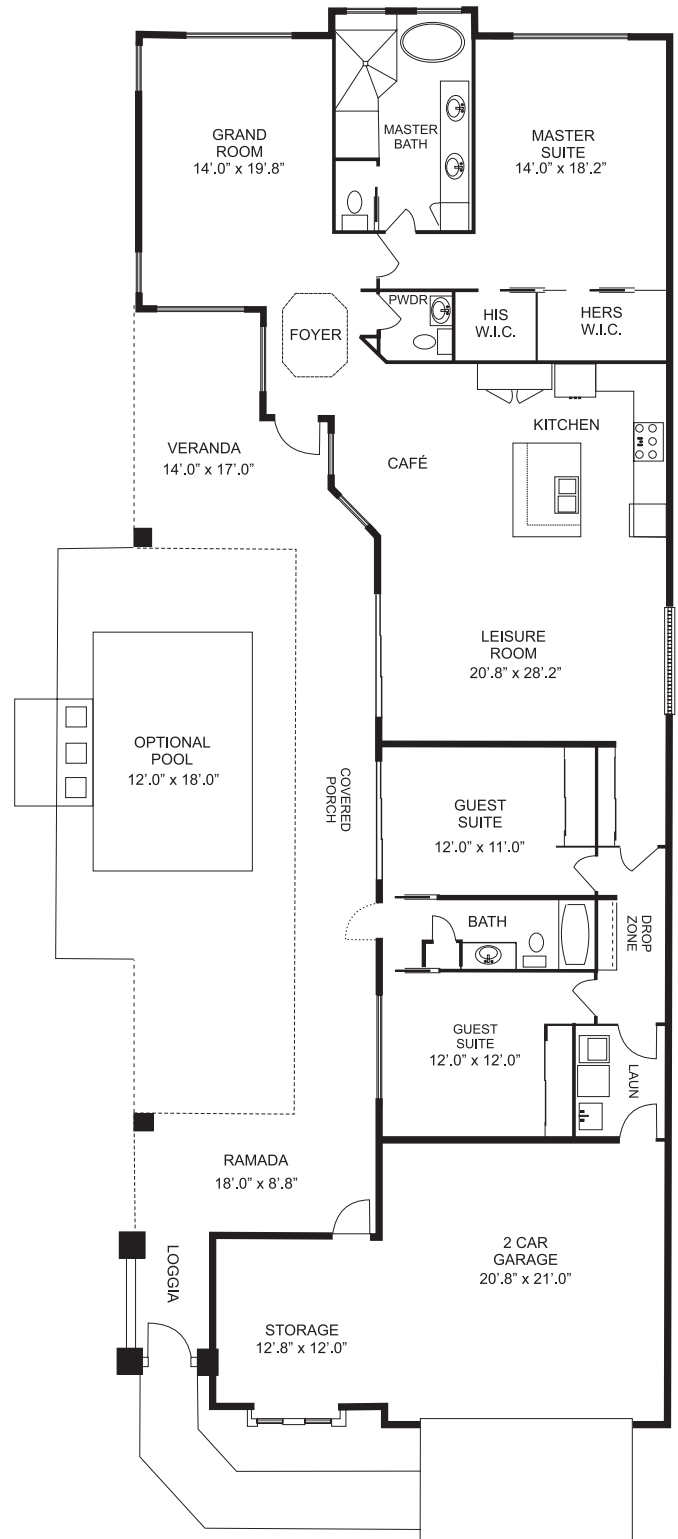
Two Bedroom Courtyard Homes from \$540,000

DESIGN FEATURES

- Custom Cabinetry
- Granite Counter Tops
- Tiled Living Areas
- Carpeted Bedrooms
- Water Views
- Lush Landscape
- Custom Changes Welcome

SPECIFICATIONS

- Concrete Block
- Tile Roof
- Paver Driveway & Walkways
- Alarm Systems
- Media Outlets
- Full Irrigation
- Living Area 2,325 sq ft
- Garage 664 sq ft
- Patios 626 sq ft
- Total Area 2,989 sq ft





Artfully uniting extraordinary Grand Harbor homes with extraordinary lives.

ONESothebysrealty.com | GrandHarbor@ONESothebysrealty.com

2229 Falls Circle | Vero Beach, FL 32967 | 772.562.9000

Treasure Coast Sotheby's International Realty strives for accuracy in our advertising, but errors in pricing, plans, specifications and illustrations may occur. Treasure Coast Sotheby's International Realty reserves the right to correct any such errors. Photography and artist's rendering are for illustration purposes only and may not reflect actual product. Treasure Coast Sotheby's International Realty may make changes to the products and services described at any time without notice. The products and services described herein may be out of date, and Treasure Coast Sotheby's International Realty makes no commitment to timely update this information. Consult a Treasure Coast Sotheby's International Realty sales representative for complete and current information.